



genesis[®]
NP

NP65-12R
NP65-12RFR

*Sealed Rechargeable
Lead-Acid Battery*

12V, 65.0Ah

Specifications

- **NOMINAL VOLTAGE:** 12V
- **NOMINAL CAPACITY:**

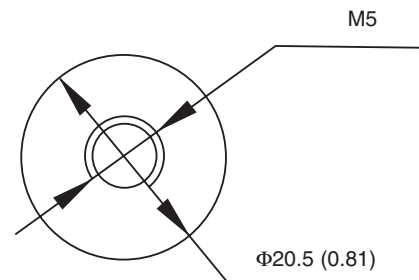
20 hr. rate of	3.25A to 10.50V	65.0Ah
10 hr. rate of	6.05A to 10.50V	60.5Ah
5 hr. rate of	11.05A to 10.20V	55.2Ah
1 hr. rate of	39.0A to 9.60V	39.0Ah
- **WEIGHT (approx.):** 50 pounds (22.7 kgs.)
- **ENERGY DENSITY (20 hr. rate):** 1.26 WH/cubic inch (76 WH/liter)
- **SPECIFIC ENERGY (20 hr. rate):** 15.5 WH/pound (34 WH/kg)
- **INTERNAL RESISTANCE OF CHARGED BATTERY:** 5 milliohms (approx.)
- **MAXIMUM DISCHARGE CURRENT WITH STANDARD TERMINALS:** 150 amperes
- **MAXIMUM SHORT-DURATION DISCHARGE CURRENT:** 800 amperes
- **OPERATING TEMPERATURE RANGE:**

CHARGE	5°F to 122°F	(-15°C to 50°C)
DISCHARGE	-4°F to 140°F	(-20°C to 60°C)
- **CHARGE RETENTION (shelf life) at 68°F (20°C):**

1 month	97%
3 months	91%
6 months	85%
- **LIFE EXPECTANCY:**

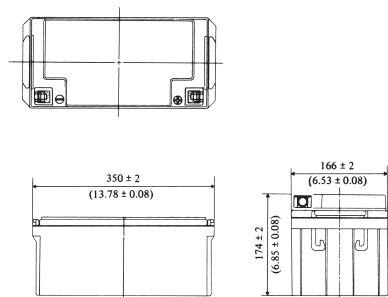
STANDBY USE	3 to 5 years
CYCLE USE (approx.):	
100% depth of discharge	250 cycles
50% depth of discharge	550 cycles
30% depth of discharge	1200 cycles
- **SEALED CONSTRUCTION:** Can be operated in any position without leakage.
- **STANDARD TERMINAL:** Receptacle terminal
- **HOUSING MATERIAL:** Container and cover made from Flame Retardant ABS (UL94-V0/L.O.I.>28%)

Terminal



DIMENSIONS: MM (INCHES)

Dimensions



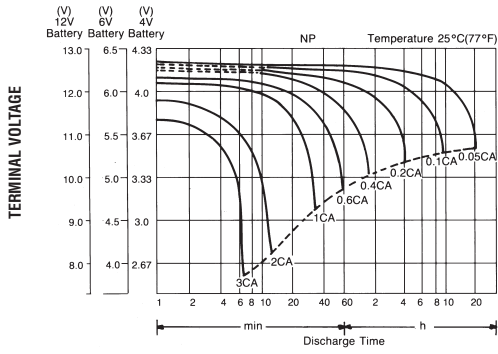
UL listing pending - File No MH16464

EnerSys[™]
Power/Full Solutions

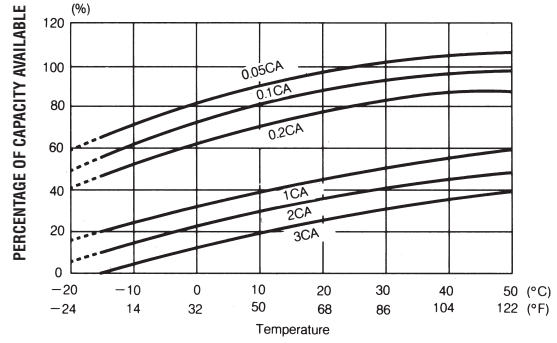


Publication No: EN-NP65-12R-01 • July 2005

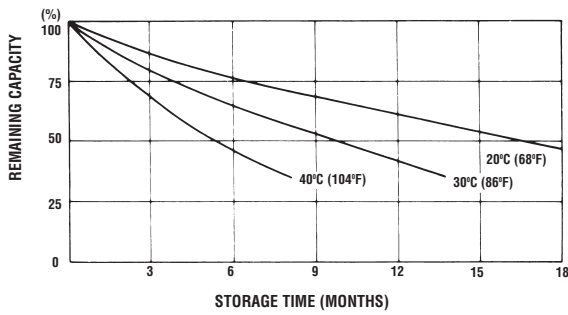
DISCHARGE CHARACTERISTIC CURVES AT 25°C (77°F)



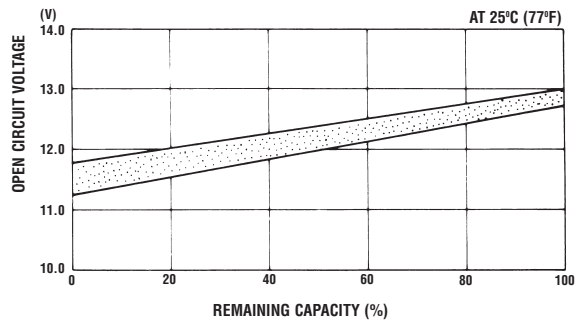
TEMPERATURE EFFECTS IN RELATION TO BATTERY CAPACITY



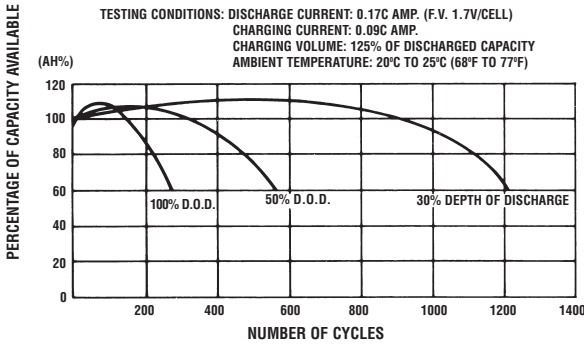
SELF DISCHARGE CHARACTERISTICS



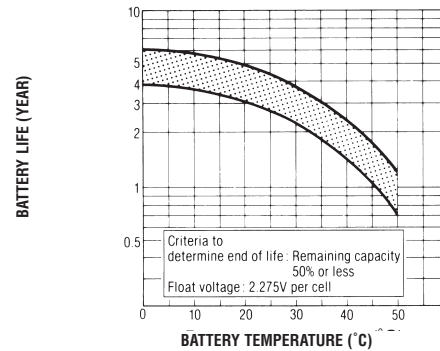
OPEN CIRCUIT VOLTAGE VS REMAINING CAPACITY



CYCLE SERVICE LIFE IN RELATION TO DEPTH OF DISCHARGE



TRICKLE (FLOAT) USE LIFE CHARACTERISTICS



When the battery will be used by current in excess of 3C, consult with EnerSys prior to use.

CHARGING METHODS (At 20°C)

Cycle use: Maximum charging current 16.25A
 Charging voltage 14.4 to 15.0V
Standby use: Float charging voltage 13.50 to 13.80V

CAUTION • Avoid short circuit
 • Do not charge in a sealed container.



EnerSys
 P.O. Box 14145
 Reading, PA 19612-4145
 USA
 Tel: +1-610-208-1991
 +1-800-538-3627

EnerSys EMEA
 Brussels, Belgium
 Tel: +32 (0)2 247 94 47
EnerSys Asia
 Guandong, China
 Tel: +86 755 689 9220

Represented by: